

# Élan Cité

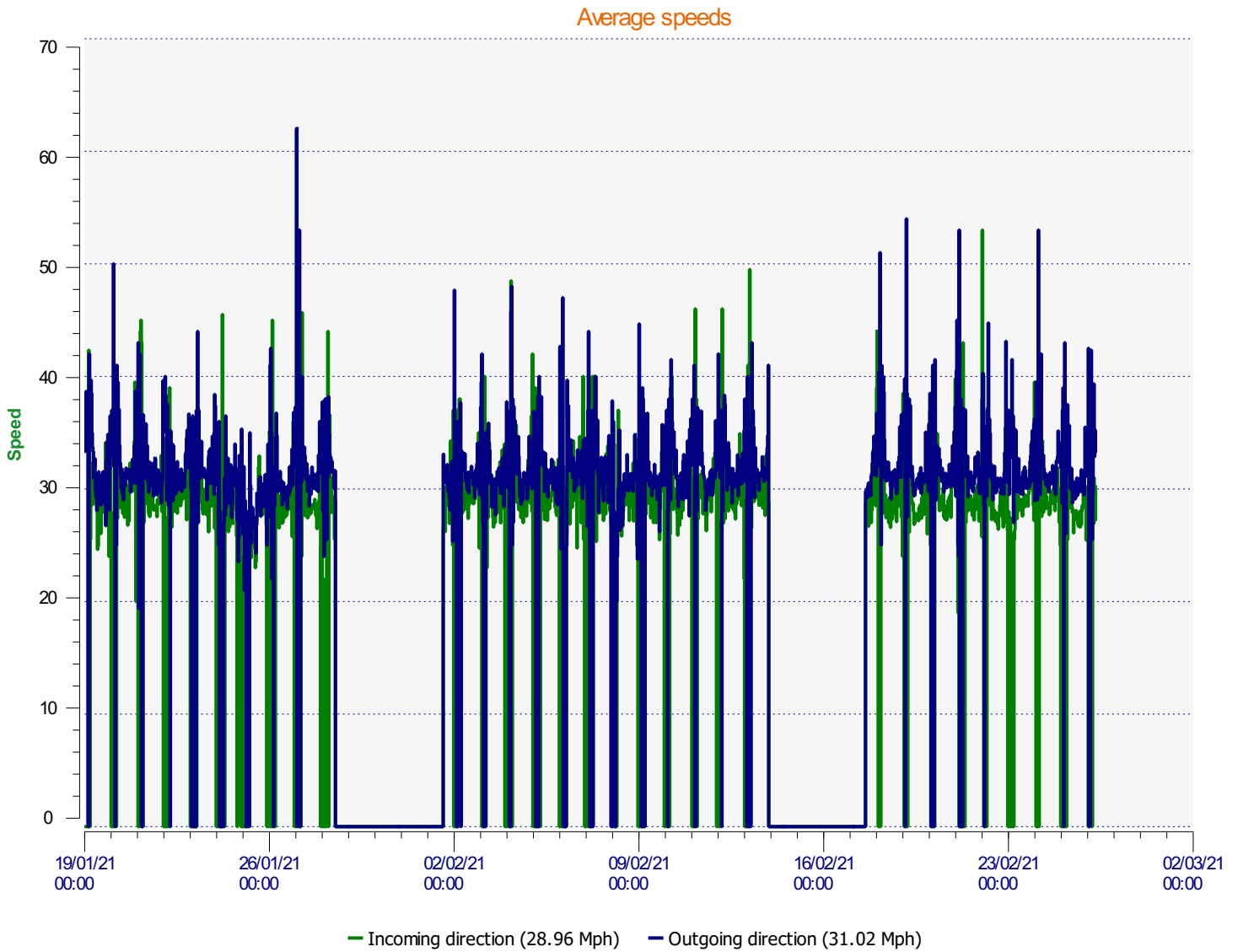


DÉTECTER • INFORMER • SÉCURISER

**Start date:** Tuesday, January 19, 2021 12:00 AM  
**End date:** Friday, February 26, 2021 7:30 AM

**Location:** Rectory Road

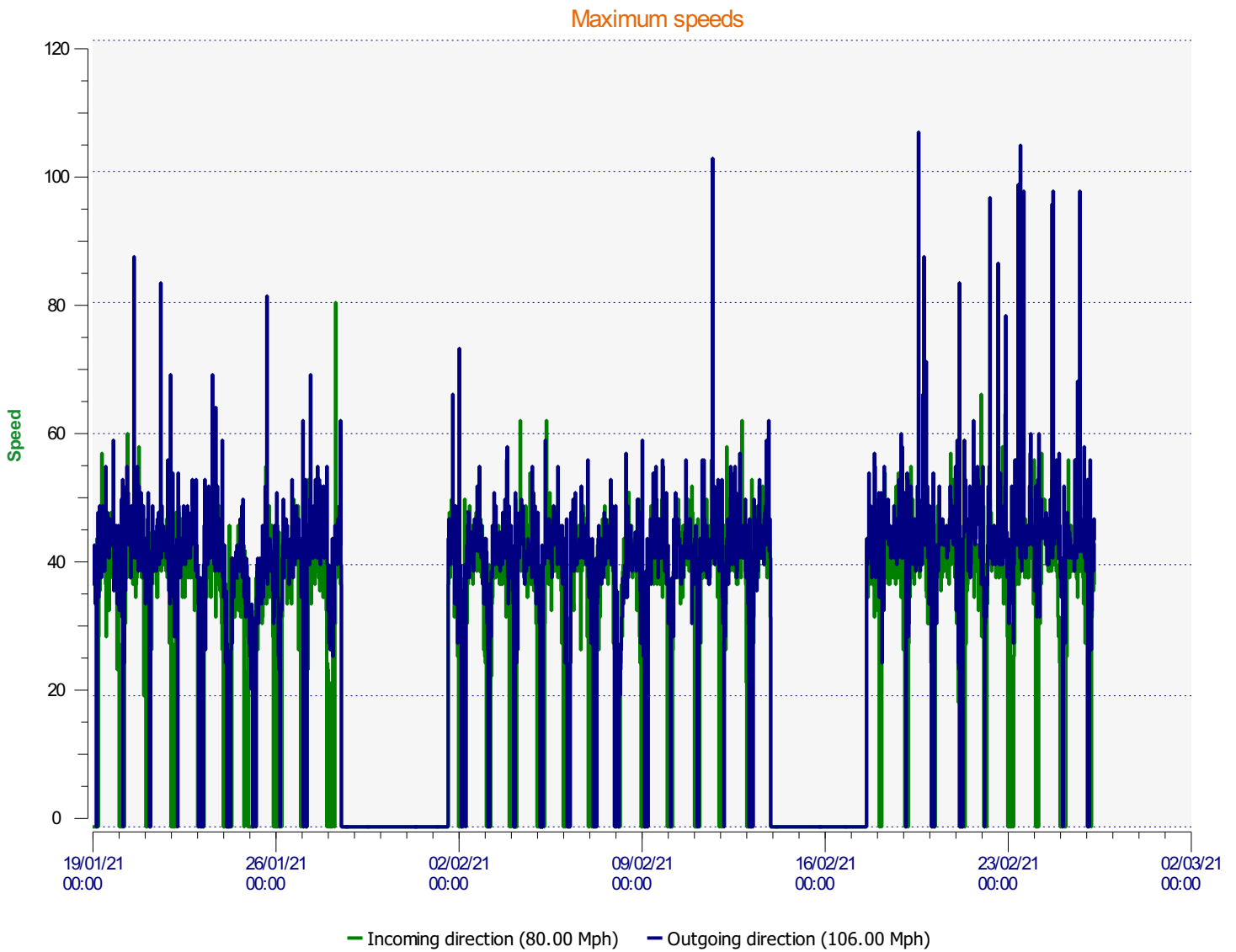
**Comments:** Incoming from Earith  
Outgoing from Station Road  
Period from 19.1.21 -14.2.21 Earith bridge closed, hence reduced traffic volumes.  
Blank periods where battery needed changing.



**Start date:** Tuesday, January 19, 2021 12:00 AM  
**End date:** Friday, February 26, 2021 7:30 AM

**Location:** Rectory Road

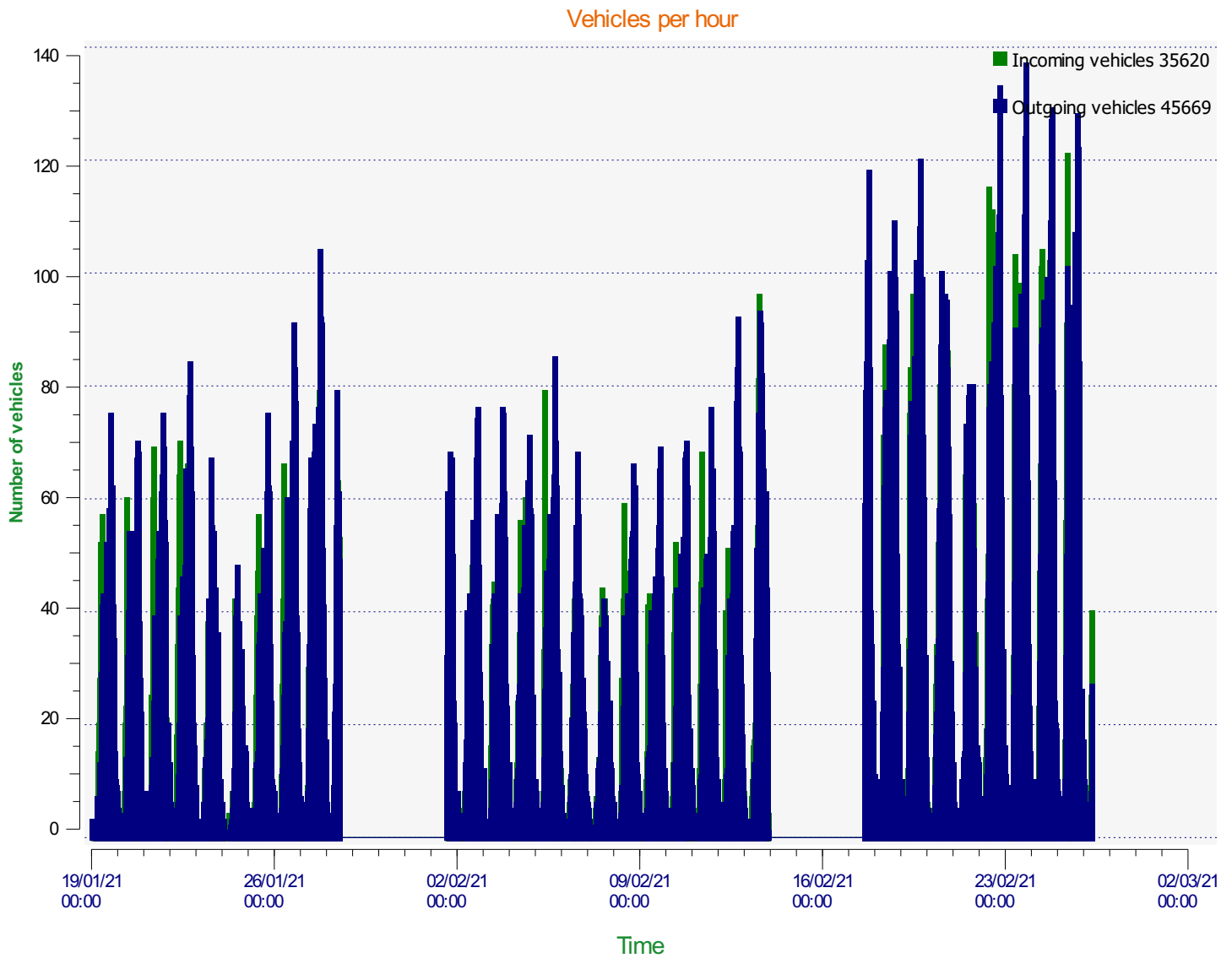
**Comments:** Incoming from Earith  
Outgoing from Station Road  
Period from 19.1.21 -14.2.21 Earith bridge closed, hence reduced traffic volumes.  
Blank periods where battery needed changing.



**Start date:** Tuesday, January 19, 2021 12:00 AM  
**End date:** Friday, February 26, 2021 7:30 AM

**Location:** Rectory Road

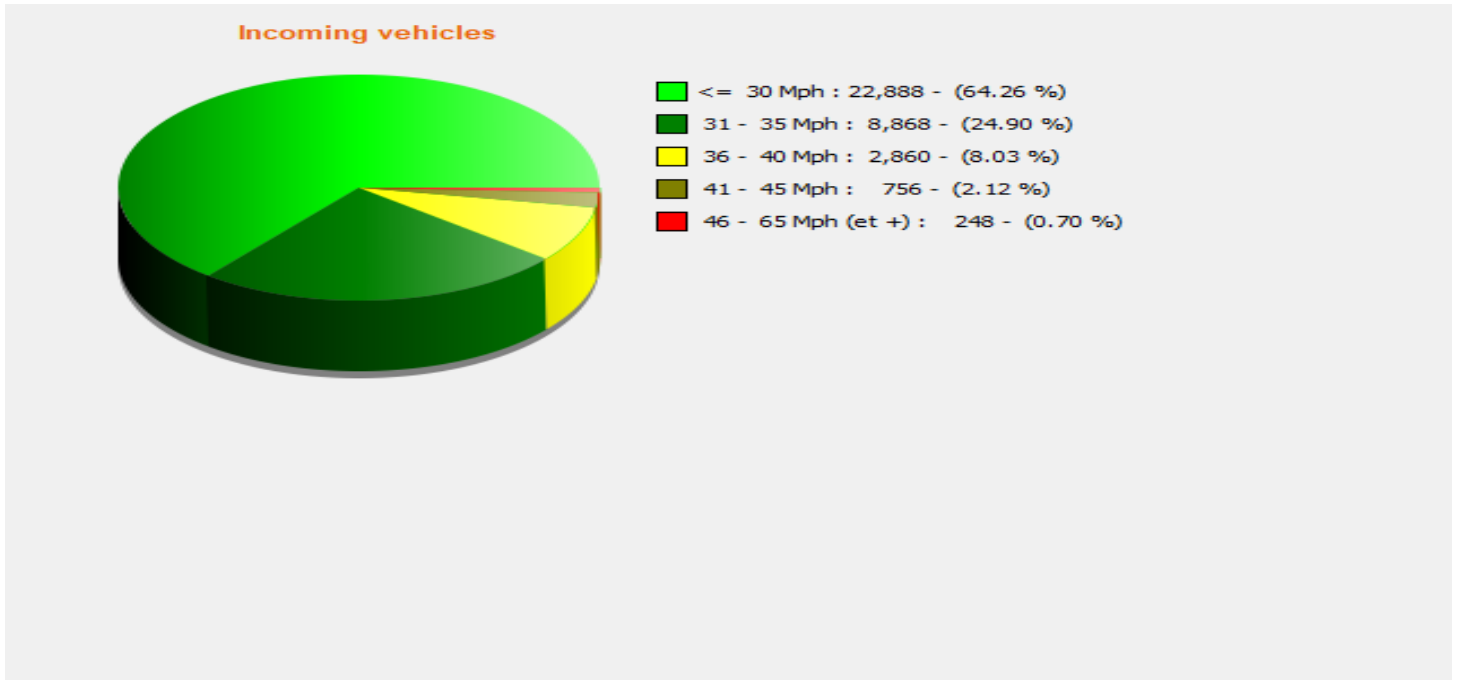
**Comments:** Incoming from Earith  
Outgoing from Station Road  
Period from 19.1.21 -14.2.21 Earith bridge closed, hence reduced traffic volumes.  
Blank periods where battery needed changing.



**Start date:** Tuesday, January 19, 2021 12:00 AM  
**End date:** Friday, February 26, 2021 7:30 AM

**Location:** Rectory Road

**Comments:** Incoming from Earith  
Outgoing from Station Road  
Period from 19.1.21 -14.2.21 Earith bridge closed, hence reduced traffic volumes.  
Blank periods where battery needed changing.

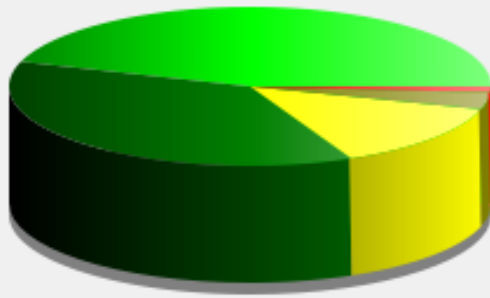


**Start date:** Tuesday, January 19, 2021 12:00 AM  
**End date:** Friday, February 26, 2021 7:30 AM

**Location:** Rectory Road

**Comments:** Incoming from Earith  
Outgoing from Station Road  
Period from 19.1.21 -14.2.21 Earith bridge closed, hence reduced traffic volumes.  
Blank periods where battery needed changing.

### Outgoing vehicles

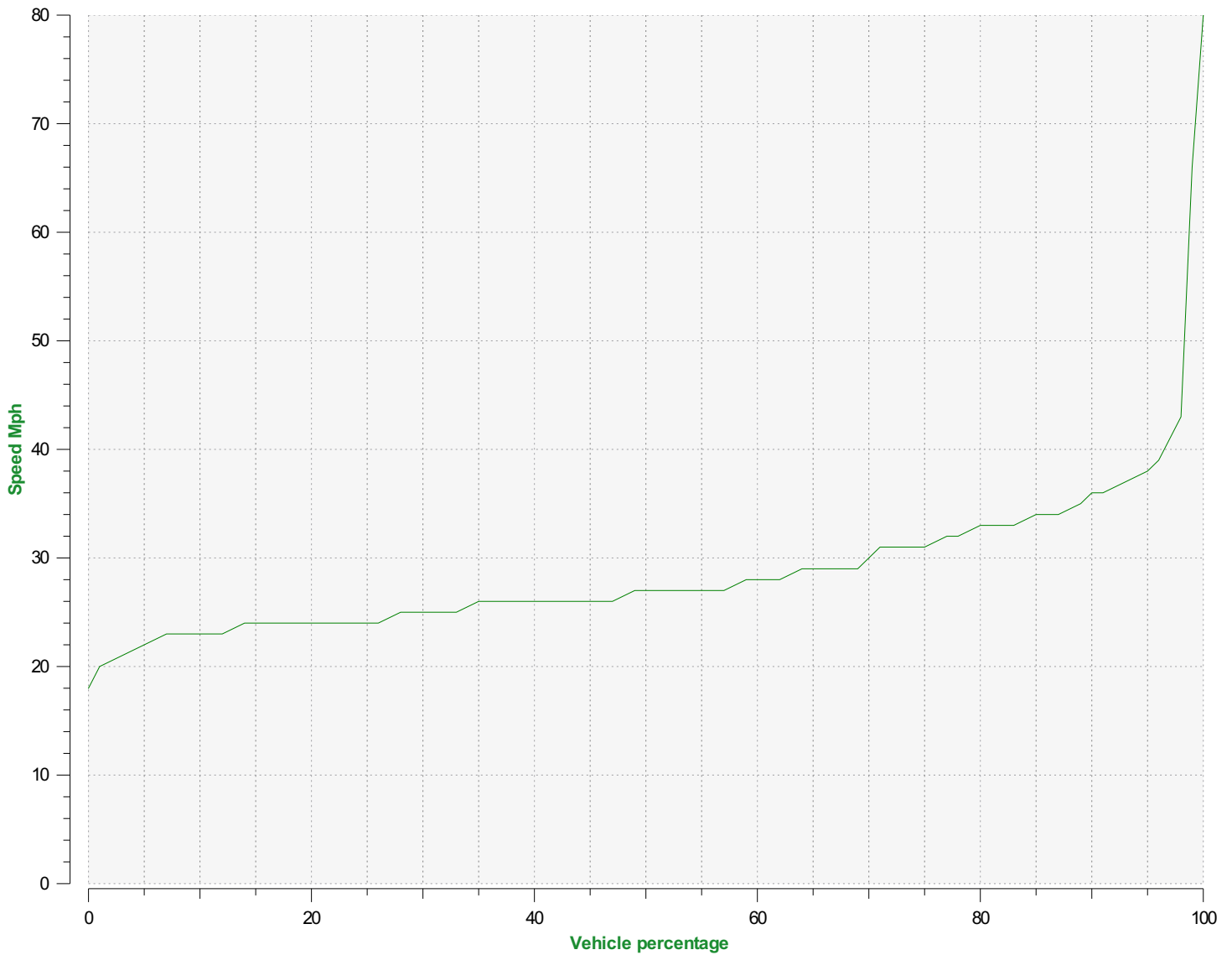


- <= 30 Mph : 20,543 - (44.98 %)
- 31 - 35 Mph : 16,861 - (36.92 %)
- 36 - 40 Mph : 6,150 - (13.47 %)
- 41 - 45 Mph : 1,553 - (3.40 %)
- 46 - 65 Mph (et +) : 562 - (1.23 %)

**Start date:** Tuesday, January 19, 2021 12:00 AM  
**End date:** Friday, February 26, 2021 7:30 AM

**Location:** Rectory Road

**Comments:** Incoming from Earith  
Outgoing from Station Road  
Period from 19.1.21 -14.2.21 Earith bridge closed, hence reduced traffic volumes.  
Blank periods where battery needed changing.



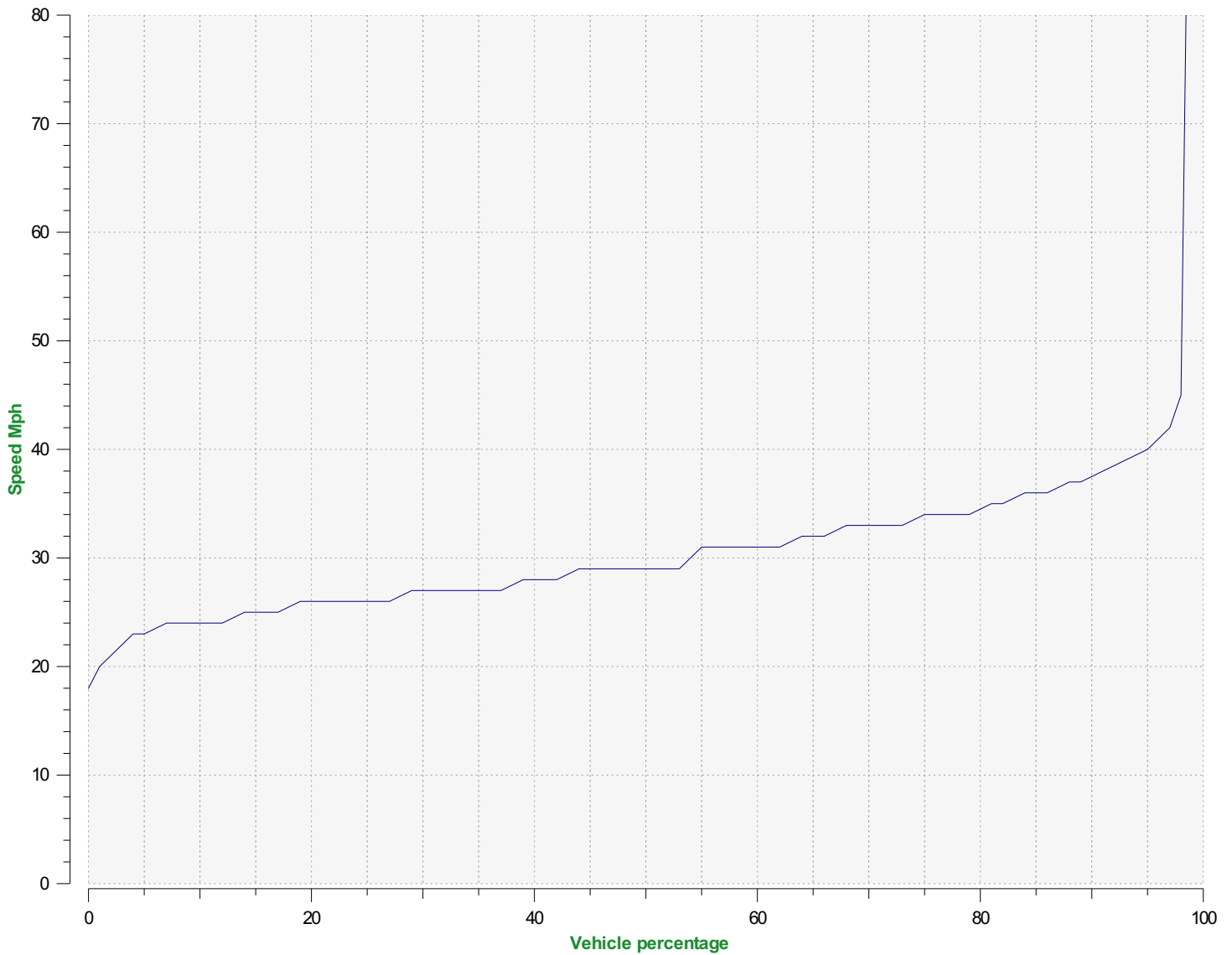
**Speed percentiles (incoming)**

**V30:** 25.00Mph **V50:** 27.00Mph **V85:** 34.00Mph

**Start date:** Tuesday, January 19, 2021 12:00 AM  
**End date:** Friday, February 26, 2021 7:30 AM

**Location:** Rectory Road

**Comments:** Incoming from Earith  
Outgoing from Station Road  
Period from 19.1.21 -14.2.21 Earith bridge closed, hence reduced traffic volumes.  
Blank periods where battery needed changing.



**Speed percentile(outgoing)**

**V30:** 27.00Mph **V50:** 29.00Mph **V85:** 36.00Mph

**Start date:** Tuesday, January 19, 2021 12:00 AM  
**End date:** Friday, February 26, 2021 7:30 AM

**Location:** Rectory Road

**Comments:** Incoming from Earith  
Outgoing from Station Road  
Period from 19.1.21 -14.2.21 Earith bridge closed, hence reduced traffic volumes.  
Blank periods where battery needed changing.